

UPG
STAY POWERED®

UNIVERSAL BATTERY® BATTERY GUIDE



POWER BEYOND **THE BATTERY**

UNIVERSAL POWER GROUP, INC. | UPGI.COM

universal battery® Sealed Lead-Acid Batteries/AGM

UPG No.	Model No.	Terminal	Nominal Voltage	Capacity 20 hr. Rate	Length	
					in.	mm
45797	UB22000	I8	2	250	6.73	170.9
45793	UB22500	I8	2	250	6.73	170.9
45798	UB23000	I8	2	300	6.77	171.9
45795	UB24000	I8	2	400	8.31	211.00
40898	UB21500	I8	2	1500	11.7	296.00
40559	UB445	F1	4	4.50	1.86	47.24
D5798	UB490	F1	4	9.00	4.04	102.6
D5731	UB613	F1	6	1.30	3.82	97.02
D5695	UB632	F1	6	3.20	2.60	66.04
D5732	UB634	F1	6	3.40	5.28	134.1
D5733	UB645	F1	6	4.50	2.78	70.61
40565	UB645WL	WL	6	4.50	2.76	70.10
D5697	UB650S Lantern	S2	6	5.00	2.64	67.05
D5897	UB650F Lantern	F1	6	5.00	2.64	67.05
D5734	UB670	F1	6	7.00	5.94	150.8
D5735	UB685	F1	6	8.50	3.90	99.06
D5736	UB6120	F1	6	12.0	5.94	150.8
D5778	UB6120	F2	6	12.0	5.94	150.8
40575	UB6130 TOY	Neg F1, Pos F2	6	13.0	4.25	107.9
40560	UB6420	F2	6	42.0	6.30	160.0
45969	UB62000 (Group 27 Case)	I4	6	200	12.05	306.0
45966	UB-GC2 (Golf Cart)	L5	6	200	10.24	260.0
40895	UB64000	L16	6	400	11.60	295.0
45968	UB-GC8	I8	8	200	10.23	259.8
45791	UB1208	Amp Connector	12	0.80	3.78	96.01
45799	UB1208	JST Connector	12	0.80	3.78	96.01
D5738	UB1213	F1	12	1.30	3.82	97.02
D2790	UB1220-T	ST	12	2.00	5.91	150.1
D5739	UB1222	F1	12	2.20	7.01	178.0
D5700	UB1229T	F1	12	2.90	3.11	78.99
D5740	UB1234	F1	12	3.40	5.30	134.6
D5741	UB1250	F1	12	5.00	3.54	89.91
D5777	UB1250	F2	12	5.00	3.54	89.91
40800	UB1270	F1	12	7.00	5.94	150.8
40760	UB1272	F1	12	7.20	5.94	150.8
D5743	UB1280	F1	12	8.00	5.94	150.8
D5779	UB1280	F2	12	8.00	5.95	150.8
40749	UB1290	F1	12	9.00	5.94	150.8
40748	UB1290	F2	12	9.00	5.94	150.8
40756	UB1290	T3	12	9.00	5.94	151.0
D5719	UB12100-S	F2	12	10.0	5.94	150.8
D5744	UB12120	F1	12	12.0	5.94	150.8
D5775	UB12120	F2	12	12.0	5.94	150.8
40842	UB12120	Nut & Bolt	12	12.0	5.94	150.8
40658	UB12150	.31" Tab w/ 4 mm hole	12	15.0	5.94	151.1
40672	UB12150	F2	12	15.0	5.95	151.1
D5745	UB12180	T4	12	18.0	7.15	181.6
40648	UB12180	F2	12	18.0	7.13	181.6
45570	UB12180	I1	12	18.0	7.13	181.6
40696	UB12220	T4	12	22.0	7.15	181.6
40582	UB12220	I10	12	22.0	7.15	181.6
D5747	UB12260	T3	12	26.0	6.57	166.8
40598	UB12260	I2	12	26.0	6.57	166.8
D5722	UB12350 (Group U1)	L1	12	50.0	7.75	196.8
45976	UB12350 (Group U1)	I2	12	35.00	7.75	196.8
45977	UB12500	L2	12	50.00	7.75	196.8
45979	UB12500	I6	12	50.00	7.75	196.8

Width		Total Height		Weight lbs. +/- 5%	Case Qty	Skid Qty	UPC Code
in.	mm	in.	mm				
4.73	120.1	14.37	364.9	27.56	1	96	8 06593 45797 5
4.37	111	13.4	340.0	29.30	1	69	8 06593 45793 7
5.95	151.1	14.37	364.9	39.68	1	69	8 06593 45798 2
5.94	151.00	14.40	365.00	55.10	1	69	8 06593 45795 1
7.00	178.00	16.10	410.00	127	1	24	8 06593 40898 4
1.87	47.49	4.16	105.6	1.10	20	1500	8 06593 40559 4
1.73	43.94	3.96	100.5	2.19	10	960	8 06593 45798 2
0.96	24.38	2.28	57.91	0.64	60	3780	8 06593 45731 9
1.30	33.02	4.03	102.3	1.28	30	2160	8 06593 45695 4
1.34	34.03	2.64	67.05	1.52	20	1700	8 06593 45732 6
1.88	47.75	4.18	106.1	1.59	20	1700	8 06593 45733 3
1.85	46.99	3.98	101.0	1.59	20	960	8 06593 40565 5
2.64	67.05	4.65	119.3	1.76	20	960	8 06593 45697 8
2.64	67.05	4.00	104.1	1.76	20	960	8 06593 45897 2
1.34	34.03	3.94	100.0	2.43	10	1000	8 06593 45734 0
2.24	56.89	4.53	115.0	3.30	10	600	8 06593 45735 7
1.94	49.27	3.94	100.0	4.18	10	650	8 06593 45736 4
1.94	49.27	3.82	97.02	4.06	10	650	8 06593 45778 4
2.82	71.62	5.51	139.9	5.07	10	650	8 06593 40575 4
3.50	88.90	6.69	169.9	13.20	2	180	8 06593 40560 0
6.61	167.8	8.95	227.3	60.62	1	42	8 06593 45969 6
7.09	180.0	10.67	271.0	62.40	1	50	8 06593 45966 5
7.00	178.0	15.90	404.0	126.0	1	24	8 06593 40895 3
7.08	179.8	10.67	271.0	78.30	1	30	8 06593 45968 9
0.98	24.89	2.44	61.97	0.75	1	18	8 06593 45791 3
0.98	24.89	2.44	61.97	0.75	20	2500	8 06593 45799 9
1.89	48.00	2.28	57.91	1.21	20	2000	8 06593 45738 8
0.79	20.06	3.50	88.90	1.54	20	1200	8 06593 42790 9
1.40	35.56	2.60	66.04	2.14	20	1400	8 06593 45739 5
2.20	55.88	4.10	104.1	2.59	10	1080	8 06593 45700 5
2.64	67.05	2.63	66.80	3.02	10	800	8 06593 45740 3
2.76	70.10	4.25	107.9	3.09	10	850	8 06593 45741 8
2.76	70.10	4.25	107.9	3.09	10	850	8 06593 45777 7
2.58	65.53	4.06	103.1	4.70	4	560	8 06593 40800 7
2.58	65.53	4.06	103.1	4.85	8	648	8 06593 40760 4
2.56	65.02	4.06	103.1	4.96	8	544	8 06593 45743 2
2.56	65.02	4.06	103.1	4.96	8	544	8 06593 45779 1
2.56	65.02	4.06	103.1	5.17	8	544	8 06593 40749 9
2.56	65.02	4.06	103.1	5.17	8	544	8 06593 40748 2
2.56	65.00	4.20	107.0	5.17	8	544	8 06593 40756 7
2.56	65.02	4.61	117.0	6.83	8	504	8 06593 45719 7
3.89	98.80	4.06	103.1	8.16	4	336	8 06593 45744 9
3.89	98.80	4.06	103.1	8.16	4	336	8 06593 45775 3
3.89	98.80	4.19	106.4	8.16	4	336	8 06593 40842 7
3.89	98.80	3.94	100.0	8.50	4	336	8 06593 40658 4
3.89	98.80	3.94	100.0	8.50	4	336	8 06593 40672 0
3.06	77.72	6.60	167.6	11.40	4	240	8 06593 45745 6
3.06	77.72	6.60	167.6	11.40	4	240	8 06593 40648 5
3.06	77.72	6.60	167.6	11.40	4	240	8 06593 45770 5
3.06	77.72	6.60	167.6	13.01	2	250	8 06593 40696 6
3.06	77.72	6.60	167.6	13.01	2	250	8 06593 40582 2
6.89	175.0	5.04	128.0	17.90	2	168	8 06593 45747 0
6.89	175.0	5.04	128.0	17.90	2	168	8 06593 40598 3
5.19	131.8	7.13	181.1	22.50	1	128	8 06593 40596 9
5.19	131.8	6.30	160.0	22.50	1	128	8 06593 45976 4
5.19	131.8	6.30	160.0	22.50	1	128	8 06593 45977 1
5.19	131.8	6.30	160.0	22.50	1	128	8 06593 45979 5

universal battery® Sealed Lead-Acid Batteries/AGM

UPG No.	Model No.	Terminal	Nominal Voltage	Capacity 20 hr. Rate	Length in.	Length mm
45825	UB12550 (Group 22NF)	Z1	12	55.00	9.10	231.14
40740	UB12550 (+ ON LEFT)	Z1	12	55.00	9.06	230.12
45980	UB12550 (Group 22NF)	I4	12	55.00	9.06	230.12
40503	UB12600 (Group 34 AGM)	I6	12	60.00	10.00	254.00
45983	UB12750 (Group 24)	I4	12	75.00	10.24	260.09
45821	UB12750 (Group 24)	Z1	12	75.00	10.24	260.09
45822	UB12750 (Group 24)	I4	12	75.00	10.24	260.09
45826	UB12900 (Group 27)	Z1	12	90.00	12.05	306.07
45823	UB12900 (Group 27)	I4	12	90.00	12.05	306.07
45826	UB12900 (Group 27)	Z1	12	90.00	12.05	306.07
45978	UB121000 (Group 27)	Z1	12	100.00	12.17	309.11
45824	UB121100 (Group 27)	FL1	12	110.00	12.97	329.00
45973	UB121000 (Group 27)	I6	12	100.00	12.17	309.11
D5751	UB121100 (Group 30H)	L3	12	110.00	13.00	330.20
45981	UB121100 (Group 30H)	I6	12	110.00	13.00	330.20
40505	UB31 (Group 31 AGM)	Dual Post - Threaded & Auto	12	100.00	12.99	329.95
40994	UB121350	I6	12	135.00	13.40	340.36
45965	UB-4D AGM	L4	12	200.00	20.90	530.86
45972	UB-4D AGM w/ Auto Post	Auto Post	12	200.00	20.90	530.86
45796	UB122200	I6	12	220.00	22.60	560.00
45964	UB-8D AGM	L4	12	250.00	20.50	520.70
45971	UB-8D AGM w/ Auto Post	Auto Post	12	250.00	20.50	520.70
40653	16BAT-U (with 12V Tap)	I6	12/16	60.00	11.85	300.99

universal battery® Power Gel Batteries

UPG No.	Model No.	Terminal	Nominal Voltage	Capacity 20 hr. Rate	Length in.	Length mm
40703/47044	GC2	L5	6	200.0	7.71	196
47604	UB-U1	L1	12	33.00	7.71	196
47046	UB-U1	I6	12	60.00	7.71	196
47606	UB-24	Z1	12	75.00	10.30	262
47608	UB-27	Z1	12	90.00	12.10	307
D5874	UB-30H (Group 31)	FL2	12	100.00	12.91	328
47627	UB-30H (Group 31)	Stud	12	120.00	12.91	328
40701	UB-4D	L4	12	180.00	20.87	530
40702	UB-8D	L4	12	220.00	20.47	520
47048	UB-8D	L4	12	220.00	20.47	520
47645	UB-8D	L4	12	260.00	20.47	520

LFP Batteries

UPG No.	Model No.	Terminal	Nominal Voltage	Capacity 20 hr. Rate	Length in.	Length mm
48046	LFP645	F2	6.4	4.5	2.80	71.12
48045	LFP12180	T4	12	18.00	5.97	151.63
48040	LFP121030	I8	12.8	103.00	13.0	330
48096	LFP4D	IT	25.6	200.00	20.6	522
48097	LFP8D	IT	25.6	280.00	20.6	522

Marine UX Batteries

UPG No.	Model No.	Terminal	Nominal Voltage	Capacity 20 hr. Rate	Length in.	Length mm
45120	UX12550	Marine Combo Posts	12	55.00	9.01	229
45121	UX12750	Marine Combo Posts	12	75.00	10.27	260
45122	UX12900	Marine Combo Posts	12	90.00	12.10	306
45123	UX121100	Marine Combo Posts	12	110.00	12.95	329

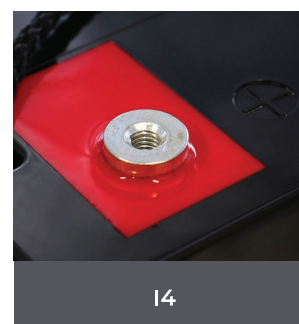
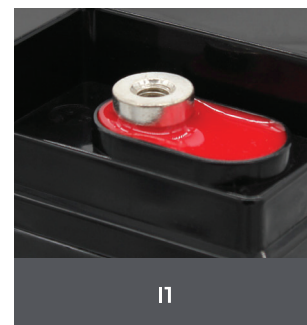
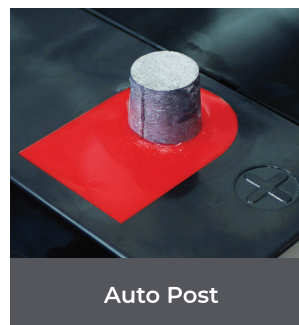
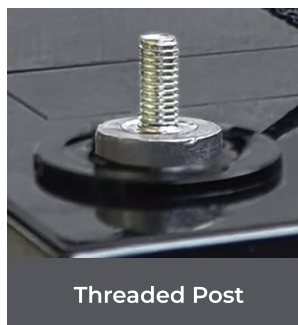
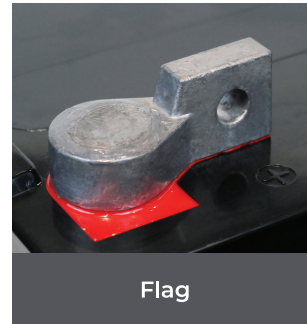
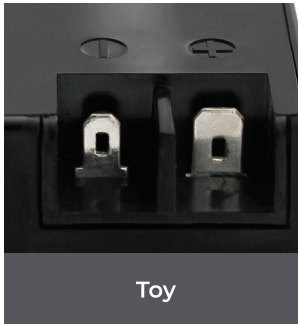
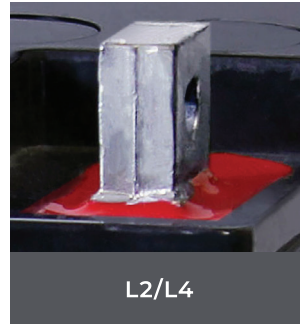
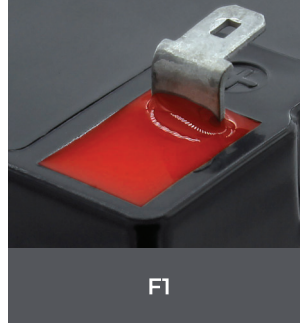
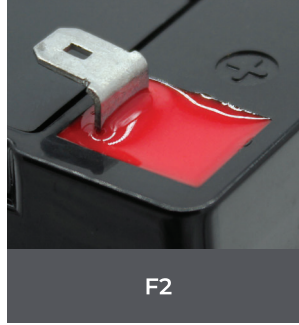
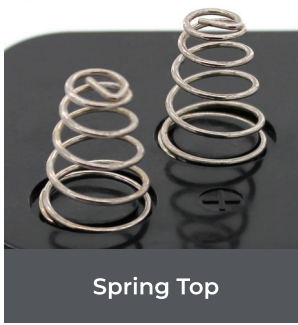
Width in.	mm	Total Height in.	mm	Weight lbs. +/- 5%	Case Qty	Skid Qty	UPC Code
5.44	138.17	9.25	234.95	38.60	1	72	8 06593 45825 5
5.44	138.17	9.25	234.95	38.60	1	72	8 06593 40740 6
5.44	138.17	8.43	214.12	38.60	1	72	8 06593 45980 1
6.40	162.56	7.20	182.88	38.14	1	72	8 06593 40503 7
6.61	167.89	8.27	210.1	47.40	1	54	8 06593 45983 7
6.61	167.89	9.23	234.44	49.10	1	54	8 06593 45821 7
6.61	167.89	8.27	210.05	49.10	1	54	8 06593 45822 4
6.61	167.89	9.13	231.90	59.50	1	42	8 06593 45826 2
6.61	167.89	8.35	212.09	59.50	1	42	8 06593 45823 1
6.61	167.89	8.27	210.10	55.10	1	42	8 06593 45826 7
6.61	167.89	9.16	232.66	63.93	1	42	8 06593 45978 8
6.89	175	8.40	213	65.7	1	42	8 06593 4582 47
6.61	167.89	8.35	212.09	63.93	1	42	8 06593 45973 3
6.90	175.26	9.60	243.84	63.30	1	42	8 06593 45751 7
6.90	175.26	8.57	217.67	63.30	1	42	8 06593 45981 8
6.81	172.97	9.33	236.99	65.00	1	42	8 06593 40505 1
6.81	172.97	11.30	287.02	87.00	1	24	8 06593 40994 3
8.11	205.99	9.65	245.11	114.60	1	24	8 06593 45965 8
8.15	207.01	9.65	245.11	114.60	1	24	8 06593 45972 6
4.92	125.00	12.4	316.00	127.00	1	96	8 06593 45796 7
10.55	267.97	9.65	245.11	154.00	1	18	8 06593 45964 1
10.60	269.24	9.65	245.11	154.00	1	18	8 06593 45971 9
6.65	168.91	14.20	360.68	50.71	1	60	8 06593 40655 3

Width in.	mm	Total Height in.	mm	Weight lbs. +/- 5%	Case Qty	Skid Qty	UPC Code
5.16	131	7.15	182	20.90	1	50	8 06593 40703 1
5.16	131	7.15	182	20.90	1	130	8 06593 47604 4
5.16	131	7.15	182	20.90	1	75	8 06593 47046 2
6.65	169	9.10	231	47.00	1	54	8 06593 47606 8
6.61	168	9.10	230	55.12	1	42	8 06593 47608 2
6.77	172	9.29	236	67.24	1	42	8 06593 45874 3
6.77	172	9.29	236	67.24	1	42	8 06593 47627 3
8.11	206	9.61	244	132.28	1	18	8 06593 40701 7
10.55	268	9.65	245	171.96	1	18	8 06593 40702 4
10.55	268	9.65	245	160.95	1	18	8 06593 47048 6
10.55	268	9.65	245	171.96	1	18	8 06593 47645 7

Width in.	mm	Total Height in.	mm	Weight lbs. +/- 5%	Case Qty	Skid Qty	UPC Code
1.90	48.26	4.20	106.68	0.83	1	20	8 06593 48046 1
3.87	98.29	4.24	107.69	4.60	1	252	8 06593 48045 4
6.81	173	8.50	216	23.1	1	40	8 06593 48040 9
10.6	269	8.82	219	89.3	1	30	8 06593 48096 6
10.6	269	9.37	238	108	1	120	8 06593 48097 3

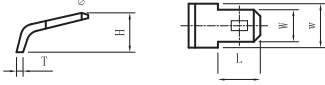
Width in.	mm	Total Height in.	mm	Weight lbs. +/- 5%	Case Qty	Skid Qty	UPC Code
5.44	138	9.48	254	40.10	1	84	8 06593 45120 1
6.61	168	9.40	255	55.30	1	54	8 06593 45121 8
6.61	168	9.36	257	62.50	1	42	8 06593 45122 5
6.76	171	9.25	235	65.50	1	42	8 06593 45123 2

Terminal Guide



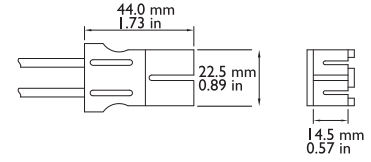
Terminal Configurations

F Series (Faston Tabs)

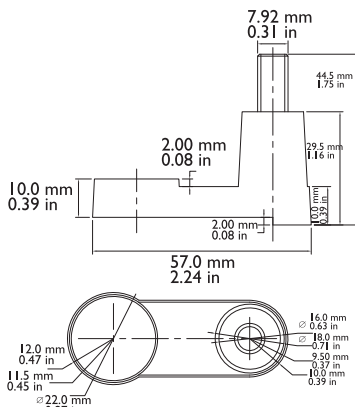


Dimension Type	L	W	w	H	T
F1	6.50 mm 0.26 in	4.75 mm 0.19 in	6.00 mm 0.24 in	5.00 mm 0.20 in	0.80 mm 0.03 in
F2	7.80 mm 0.31 in	6.35 mm 0.25 in	7.80 mm 0.31 in	6.00 mm 0.24 in	0.80 mm 0.03 in

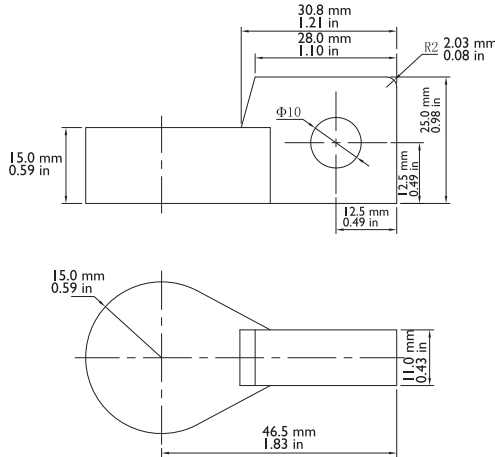
P Series (Plastic Connector) P2



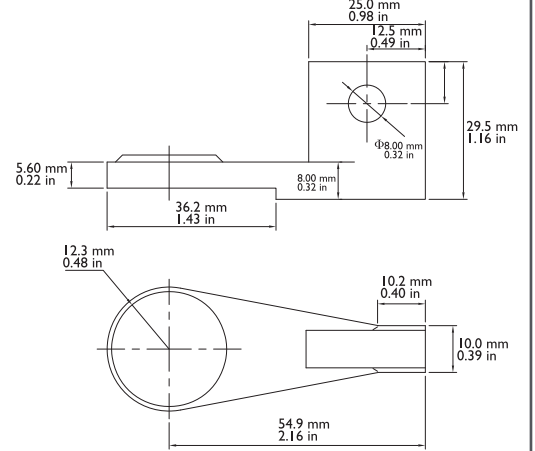
Marine Combo Post



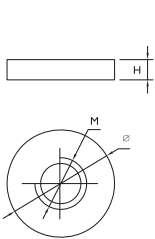
Flag Terminal (FL1)



Flag Terminal (FL2)

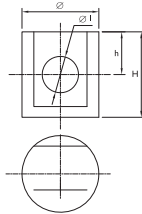


I Series (Internal Thread)



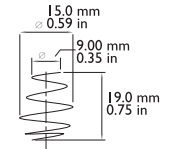
Dimension Type	M	∅	H
I1	6.00 mm 0.24 in	13.0 mm 0.51 in	4.00 mm 0.16 in
I2	6.00 mm 0.24 in	15.0 mm 0.59 in	3.00 mm 0.12 in
I3	9.52 mm 0.37 in	16.0 mm 0.63 in	4.00 mm 0.16 in
I4	6.00 mm 0.24 in	15.0 mm 0.59 in	4.00 mm 0.16 in
I5	9.52 mm 0.37 in	17.0 mm 0.67 in	4.00 mm 0.16 in
I6	6.00 mm 0.24 in	16.0 mm 0.63 in	4.00 mm 0.16 in
I7	9.52 mm 0.37 in	16.0 mm 0.63 in	4.00 mm 0.16 in
I8	10.0 mm 0.39 in	19.0 mm 0.75 in	2.00 mm 0.08 in
I9	9.52 mm 0.37 in	19.0 mm 0.75 in	4.00 mm 0.16 in

Z Series (Z Post Terminal)

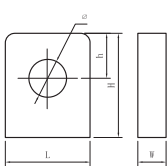


Dimension Type	∅	∅1	H	h
Z1	17.0 mm 0.67 in	8.00 mm 0.32 in	21.5 mm 0.85 in	9.00 mm 0.35 in

S Series S1

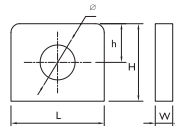


L Series (L Type Terminal)



Dimension Type	L	W	H	h	∅
L1	17.5 mm 0.69 in	7.00 mm 0.28 in	17.0 mm 0.69 in	7.00 mm 0.28 in	8.50 mm 0.34 in
L2	17.0 mm 0.69 in	9.00 mm 0.35 in	17.0 mm 0.69 in	9.00 mm 0.35 in	6.50 mm 0.26 in
L3	25.5 mm 1.00 in	7.00 mm 0.28 in	22.0 mm 0.87 in	10.5 mm 0.41 in	8.50 mm 0.34 in
L4	26.5 mm 1.04 in	8.00 mm 0.32 in	24.5 mm 0.97 in	12.0 mm 0.47 in	9.00 mm 0.35 in
L5	26.5 mm 1.04 in	8.50 mm 0.34 in	24.0 mm 0.95 in	10.0 mm 0.39 in	8.00 mm 0.32 in

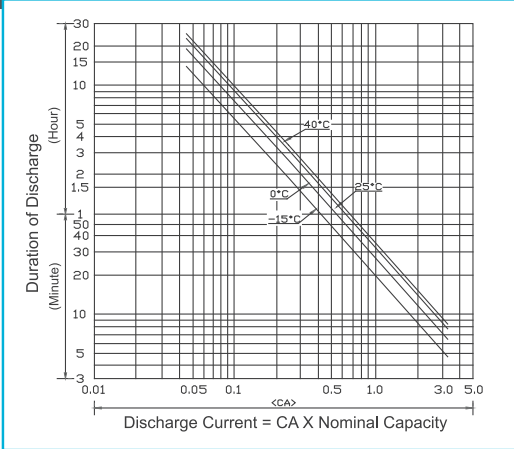
T Series (Tab Terminal)



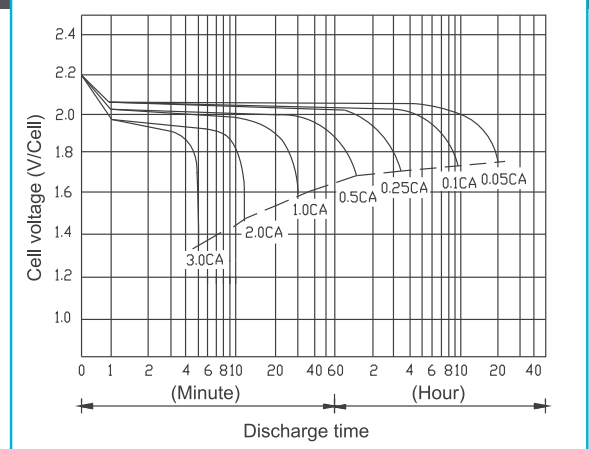
Dimension Type	L	W	w	h	∅
T3	14.0 mm 0.55 in	2.00 mm 0.09 in	12.5 mm 0.49 in	6.00 mm 0.24 in	6.00 mm 0.24 in
T4	12.0 mm 0.47 in	3.00 mm 0.12 in	12.5 mm 0.49 in	5.00 mm 0.20 in	5.50 mm 0.22 in

Performance Characteristics

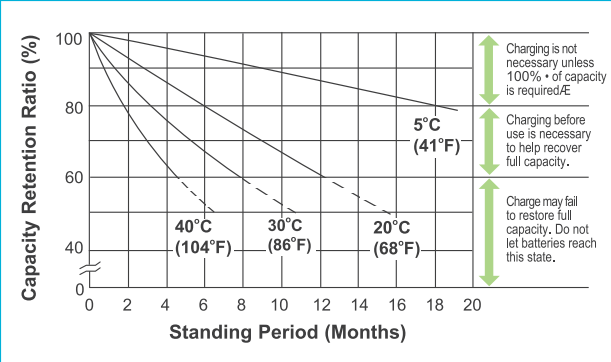
DISCHARGE TIME VS DISCHARGE CURRENT



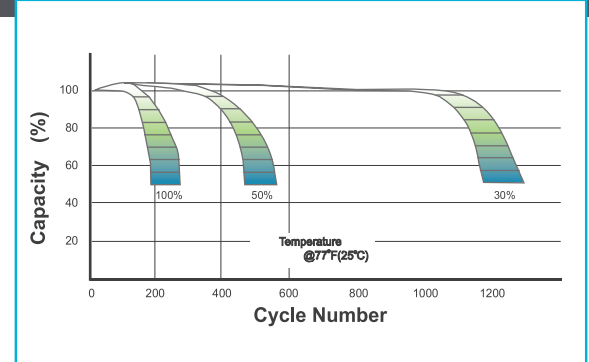
DISCHARGE CHARACTERISTICS



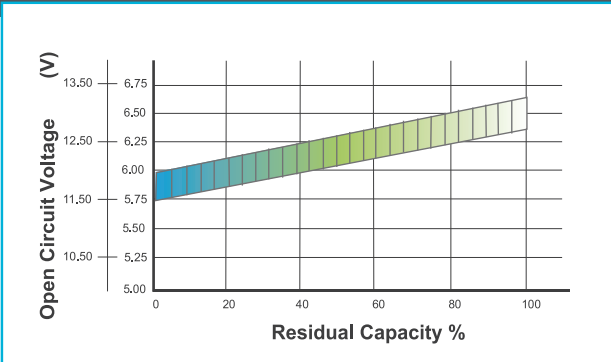
SHELF LIFE AND STORAGE



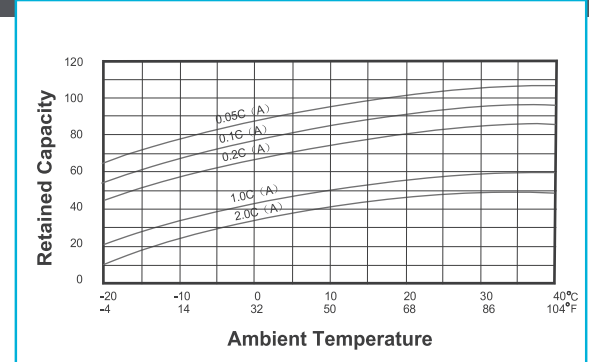
CYCLE LIFE VS DEPTH OF DISCHARGE



OPEN CIRCUIT VOLTAGE VS RESIDUAL CAPACITY



EFFECT OF TEMPERATURE ON CAPACITY



CHARGE CURRENT AND FINAL DISCHARGE VOLTAGE

Application	Charge Voltage(V/Cell)			Max.Charge Current	Final Discharge Voltage V/Cell	1.75	1.70	1.60	1.30
	Temperature	Set Point	Allowable Range						
Cycle Use	25°C(77°F)	2.45	2.40-2.47	0.30C	Discharge	0.2C>(A)	0.2C<(A)<0.5C	0.5C<(A)<1.0C	(A)>1.0C
Standby	25°C(77°F)	2.30	2.27-2.30		Current(A)				



120 Dividend Dr. Ste 100
Coppell, TX 75019

Main 469.892.1122
Toll Free 866.892.1122

Fax 469.892.1123
sales@upgi.com

Learn more about our products at www.upgi.com

Follow us on social media

Due to continuous improvements to our products, product specifications and images may vary slightly from depiction.

Universal Battery® is a trademark of Universal Power Group, Inc.
Copyright © 2026 Universal Power Group, Inc. All rights reserved.